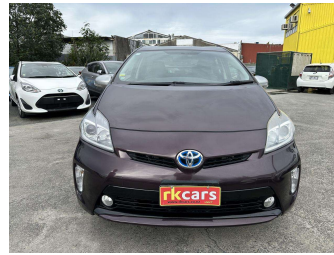


2013 Toyota Prius G Low KMS + Leather + Free



Purchase Price **\$13,988**

Includes GST
Excludes on-road costs of \$595

Indicative repayments


\$56.85 per week*

Based on a 60 month term & 25% deposit.
Total repayments (260) = **\$18,425.79**

Gain peace of mind with
Mechanical Breakdown Insurance. Ask us how.


Top features

- » 3 Rear Shoulder Belts
- » 8 Air Bags
- » ABS Braking w/ EBD
- » Air Conditioning
- » Alloys
- » Black Interior
- » Central Locking
- » Central Locking
- » Chain Driven
- » Child seat anchor poin...
- » Clean Car Rebate
- » Climate Control
- » Dark Interior
- » Digital Dash
- » Digital Display
- » Electric Mirrors
- » Electric Mirrors (Retr...
- » Electric Windows

Body Style	5 door, Hatchback	Reg No.	-
Odometer	61,367 km	Ext Colour	Brown
Engine	1800 cc, Hybrid	History	-
Fuel Type	Hybrid	Seats	5 seats, Full Leather Pack
Transmission	Automatic, Front Wheel	CO2 Emissions	★★★★☆
Wheels	Custom Alloys	98 grams/km	
VIN	7AT0H637X23617382	Energy Economy	★★★★☆☆
Interior	Black, Full Leather Pack	Annual fuel cost of \$1,650	
Safety		4.2L per 100km	
	<small>Based on 2023 UCSR rating for 09-16 models</small>	Cost per year is an estimate based on petrol price of \$2.80 per litre and an average distance of 14000 km. Emissions and Energy Economy figures standardised to 3P WLTP.	
		Stock ID: 6894	



R K Cars | Phone 0508 75 22 77 | Email sales@rkcars.co.nz
160 Stoddard Road, Behind Gull, Wesley, Auckland 1041, New Zealand
www.rkcars.co.nz

 ★★★★☆
4.43 | 948 reviews

* R K Cars is not a lender nor a financial adviser. Any amounts displayed should not be seen as an offer of finance or taken as financial advice. The interest rate, fees and loan term used in this calculation may not actually represent those available from lenders. Actual interest rates, fees and loan terms will vary per lender and are typically based on an assessment of your credit risk and responsible lending criteria. Any repayment amounts displayed are indicative only and have been calculated using several other indicative inputs. The interest rate used in this calculation is an arbitrary 10.99%, however exact interest rates vary per lender. The term of the loan used in this calculation is 60 month. Exact terms available vary per lender although options typically include 6, 12, 18, 24, 36, 48 and 60 months. This calculation also includes a typical mandatory fee charged by lenders. This is a one-off establishment fee of \$395.00. Typically, this fee can be paid upfront or, as in this calculation, be capitalised over the contract term, ie. included in the loan amount. This fee can vary per lender and other non-mandatory fees and charges may also apply. The total amount of repayments has been calculated by multiplying 260 weekly repayments (based on a 60 month term) by the weekly repayment amount of \$56.85 which equals \$18,425.79. This calculator does not consider any of your own personal circumstances and we strongly suggest you seek budgeting advice prior to committing to any loan contract. Responsible lending criteria and lender terms and conditions will likely apply to any finalised loan contract. Proof of security and/or vehicle insurance may also be required before proceeding.